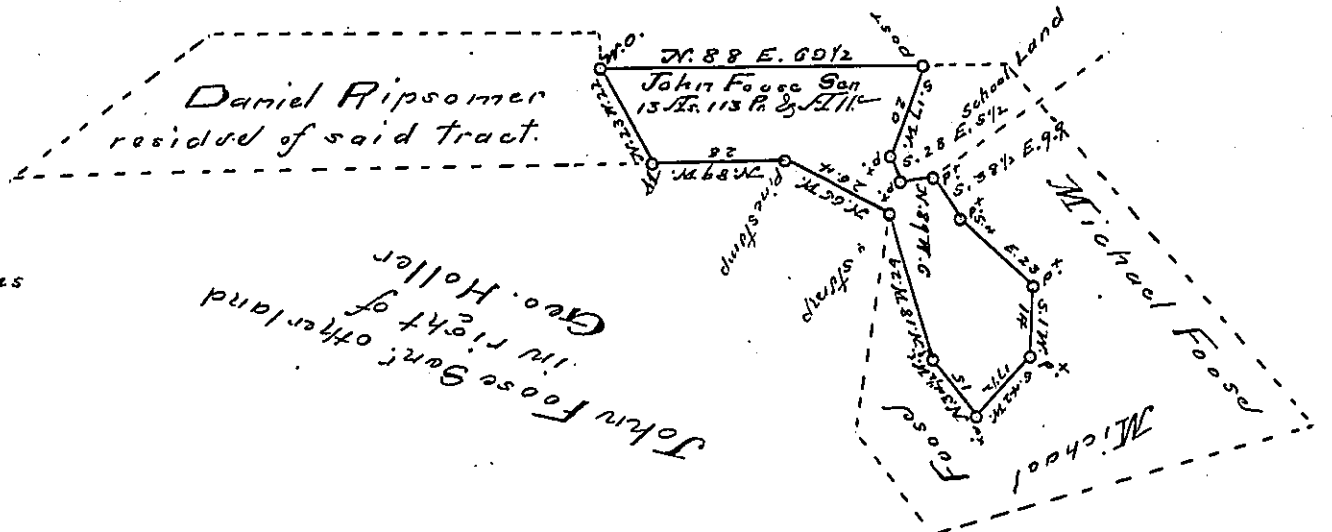


Daniel Pipsomer



Courses & Distances

- N. 88 E. 69 1/2 Post.
- S. 17 W. 20 Post.
- S. 28 E. 5 1/2 Post.
- N. 89 E. 6 Post.
- S. 38 1/2 E. 9.9 Pt.
- S. 47 E. 23 Pt.
- S. 1 W. 14 Pt.
- S. 42 W. 17 1/2
- N. 34 1/2 W. 15
- N. 18 W. 29
- N. 65 W. 26.4
- N. 89 W. 28
- N. 23 W. 22

Draft of a tract of land situated in Tyrone Township Perry County containing thirtynine Acres one hundred and thirtynine perches and allowance of six per cent for roads &c.

Part of a larger tract containing 58 A. 9 P. & allowance.

Originally surveyed on an Order granted to John Kirkwood dated the 1<sup>st</sup> day of September A.D. 1766 No. 1075.

The above part surveyed for John Fosse Sen. the owner to patent March 11<sup>th</sup> 1844.

Jacob Sallada Esq. }  
 Surveyor General of Pa. } P. W. Wilson D.D.

IN TESTIMONY that the above is a copy of the original remaining on file in the Department of Internal Affairs of Pennsylvania, made conformably to an Act of Assembly approved the 16th day of February, 1833, I have hereunto set my Hand and caused the Seal of said Department to be affixed at Harrisburg, this  
 — twentieth day of February — 1895.

*Isaac B. Brown*  
 Secretary of Internal Affairs.